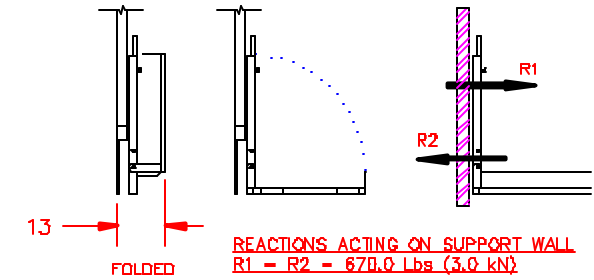
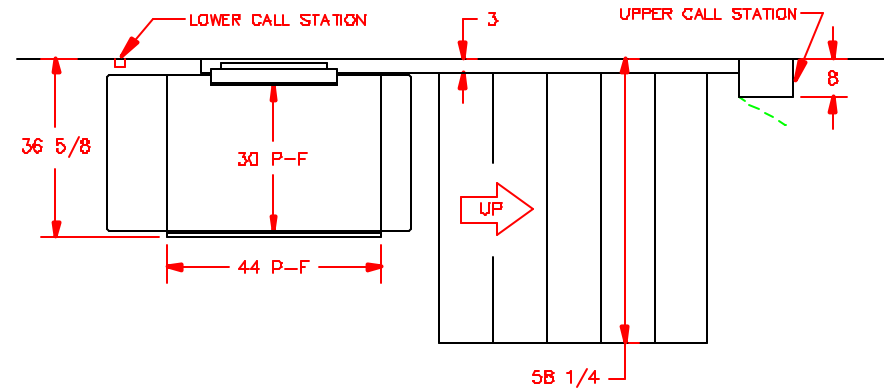


ES-125 PLUS

DIMENSIONS ARE IN INCHES

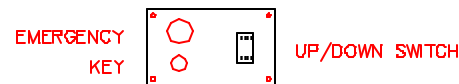
GENERAL SPECIFICATIONS:

- ① INSTALL A LOCKABLE FUSE DISCONNECT TO ISOLATE THE ELECTRIC CONTROLLER 110 VAC/1/2 HP/15AMP/MONOPHASE BY OTHERS
- ② ELECTRIC CONTROLLER FOR THE PLATFORM CSA-LR 107643-1



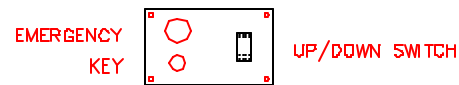
STAIRWAY PLATFORM LIFT MODEL ES-125PLUS
 ACCESS TO PLATFORM: IN LINE
 ANGLE OF STAIRCASE: 32.9°
 WIDTH OF STAIRCASE: 58 1/4"
 LENGTH OF STAIRWAY: 73 1/4"
 HEIGHT OF STAIRWAY: 39 3/4"
 NUMBER OF RISERS: 6
 NUMBER OF RAIL: 1

UPPER CALL STATION (CABINET)

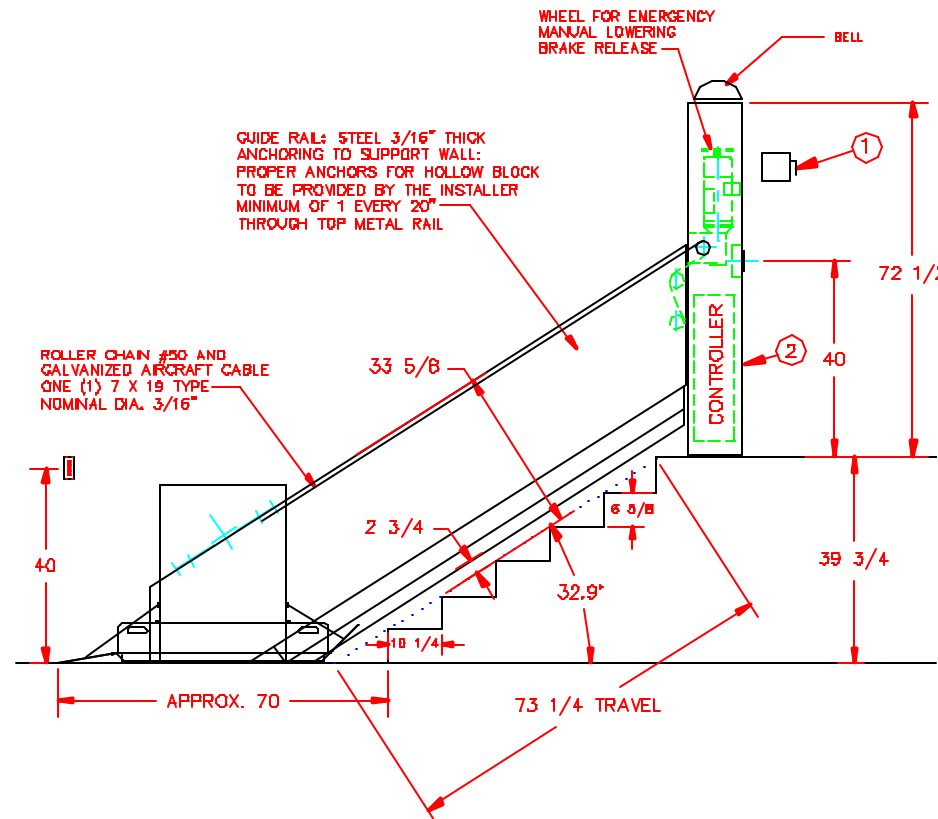
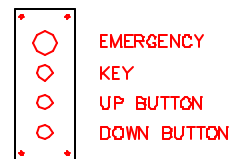


CLEARANCE OVER PLATFORM AT ALL TIMES MUST BE AT LEAST 1.5m IN ORDER TO COMPLY WITH CSA B355.

CAR STATION



LOWER CALL STATION



OPTIONS: AUDIO VISUAL ALARM

PROJECT:

1. RATED LOAD : 450 Lbs (204 kg)
2. CAPACITY : ONE PERSON IN WHEELCHAIR
3. RATED SPEED : 20 ft/min MAX. (0.10 m/s)
4. WEIGHT OF CAR : 185 Lbs
5. POWER SUPPLY : 110VAC/15A/1Ph/60hz
6. OPERATION : CONSTANT PRESSURE
7. PLATFORM SIZE: 30" X 44"
8. ELEVATING CLASS : UNENCLOSED STAIR PLATFORM LIFT
9. BEIGE COLOR STANDARD

PULL-OUT FORCE ON SUPPORT WALL IS APPROXIMATELY 670 LBS (3.0 kN). ADEQUATE STRUCTURAL SUPPORT TO BE PROVIDED AT THE TOP LANDING, THE BOTTOM LANDING, AND THROUGHOUT THE SUPPORTING WALL ALONG THE STAIRS.

MODEL: ES-125PLUS QTY: 1

TOLERANCES IF NOT SPECIFIED:				
DEC: .030	ANG: 0.150°			
SCALE:	DRAWN BY:	NO.	REVISIONS	DATE
	P. DANILIDIS			
MATERIAL:	DATE:			
S\O	09/28/02			
DRAWING NO:	REV# SHEET:	TITLE:		
8345LICBU		LIFT FOR HANDICAPPED		

THIS DRAWING SHOULD ONLY BE USED FOR REFERENCE PURPOSES