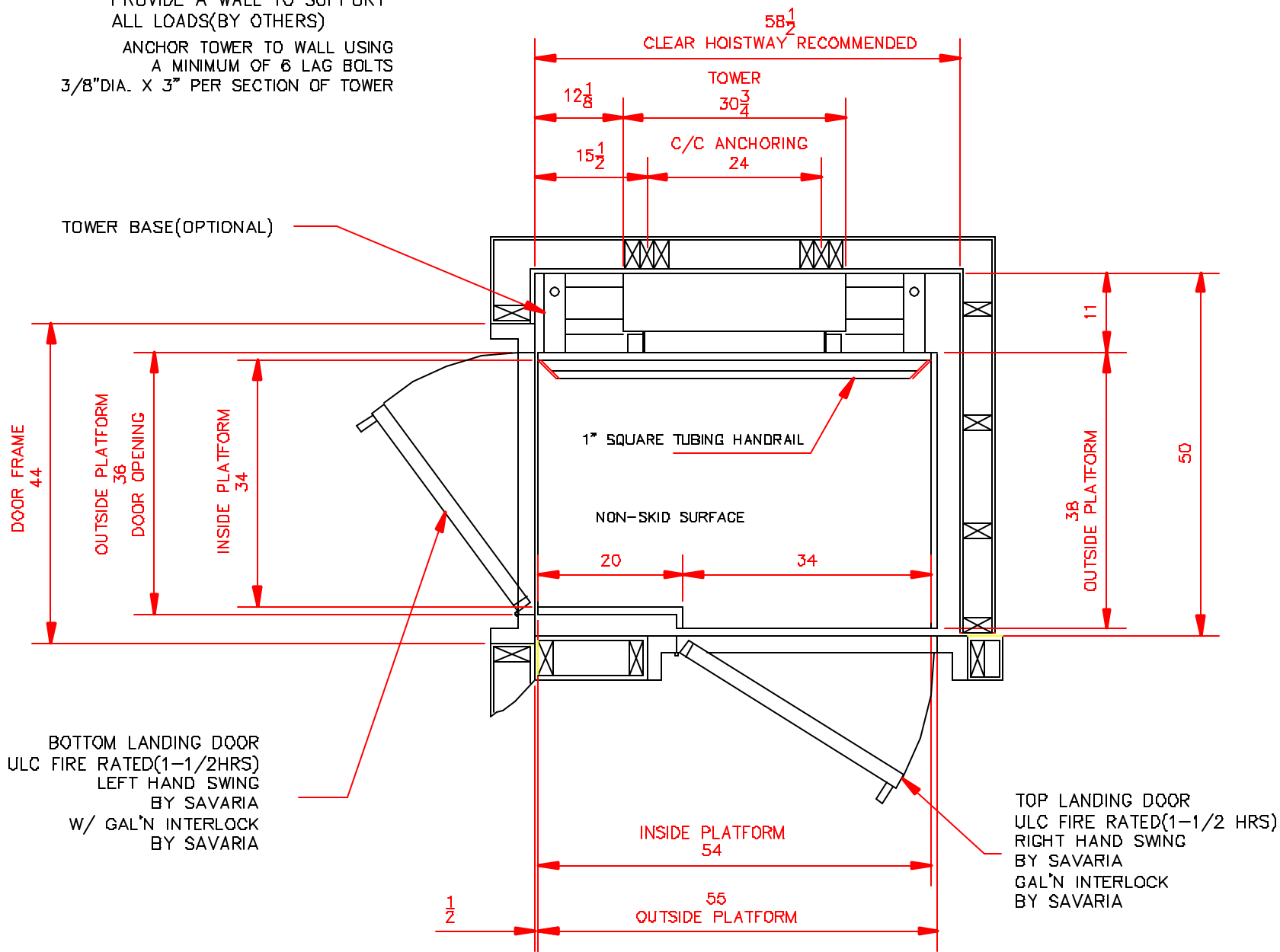
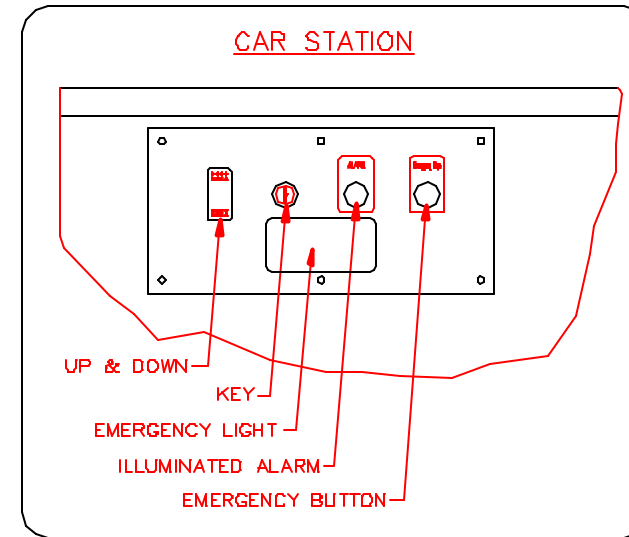


V-1504 STD - PLAN VIEW - LEFT LOWER ENTRY - RIGHT UPPER EXIT

PROVIDE A WALL TO SUPPORT ALL LOADS(BY OTHERS)
ANCHOR TOWER TO WALL USING A MINIMUM OF 6 LAG BOLTS
3/8" DIA. X 3" PER SECTION OF TOWER




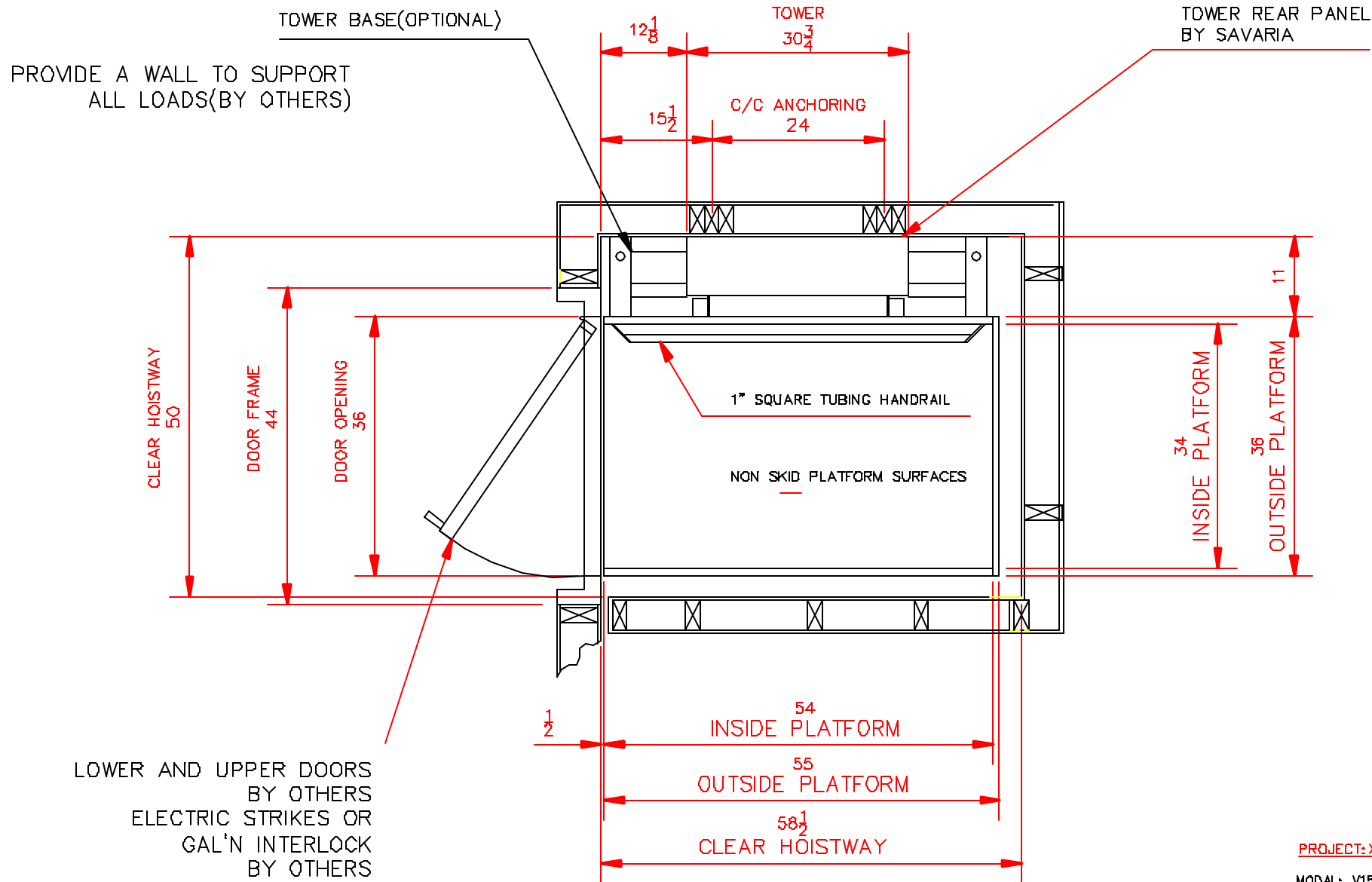
RUNWAY PLAN - TOP VIEW



PROJECT: XXXXXXXX

MODAL: V1504-STD QTE: 1


TOLERANCES IF NOT SPECIFIED				
N/A		FOR REFERENCE		
SCALE	DRAWN BY	NO.	REVISIONS	DATE
NTS	A. BOUCHARD			
MATERIAL	DATE:	 SERVICES INDUSTRIELS SAVARIA INC.		
N/A	06/25/03			
JOB #	REV#	PAGE:	TITLE:	
---	2	1	LIFT FOR HANDICAPPED	



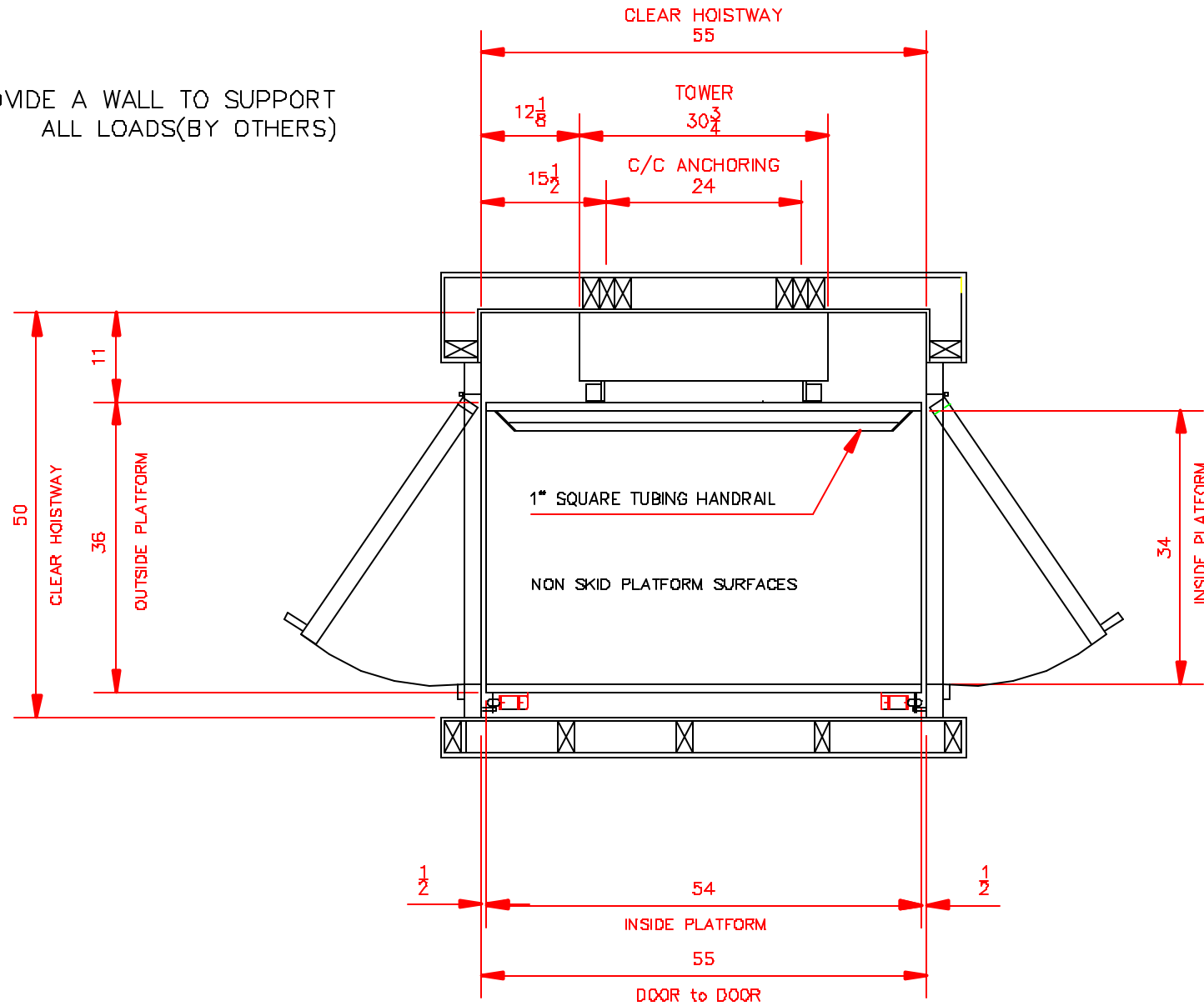
RUNWAY PLAN - TOP VIEW

PROJECT: XXXXXXX


MODAL: V1504-STD QTY: 1

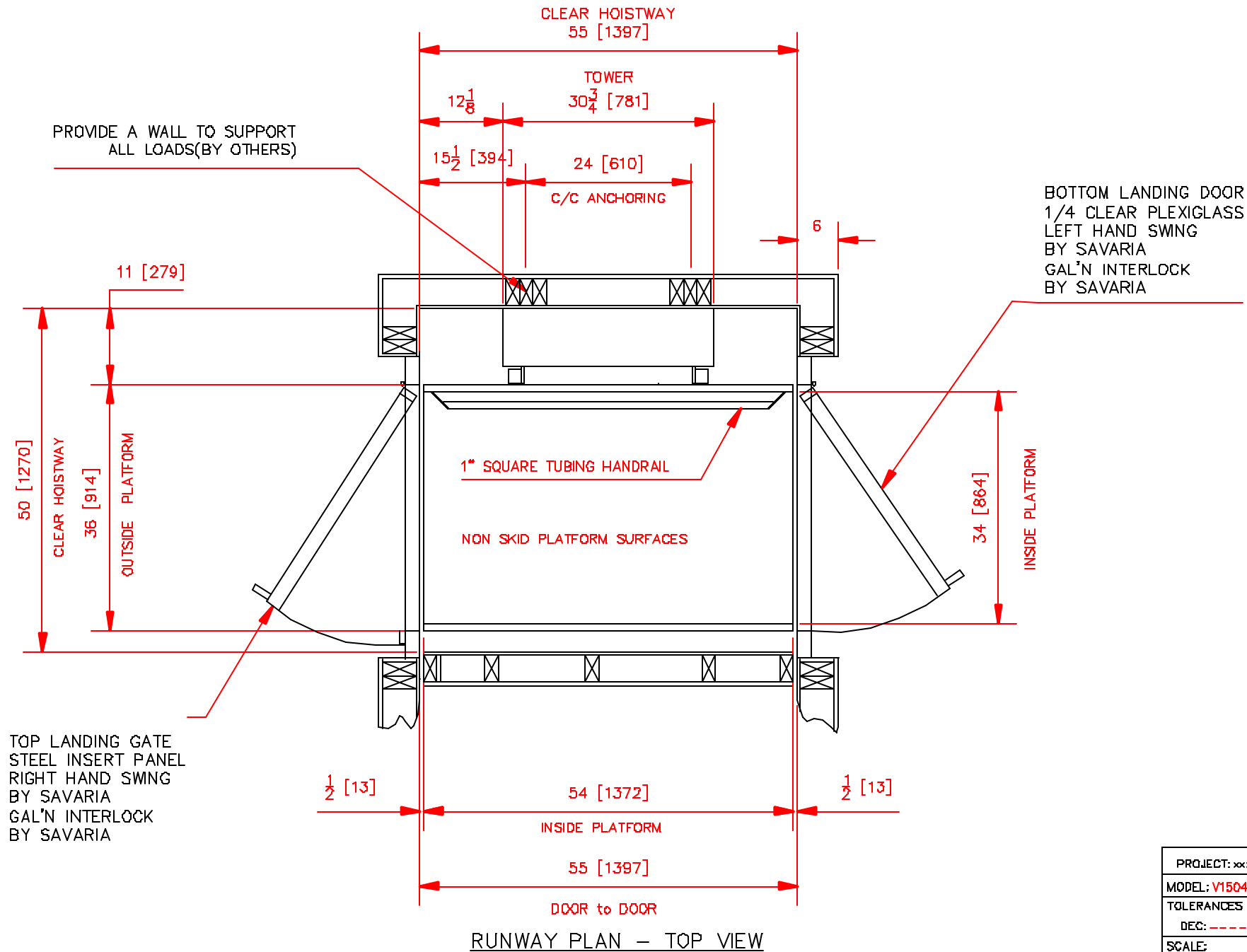
TOLERANCES IF NOT SPECIFIED:				
N/A		FOR REFERENCE		
SCALE:	DRAWN BY:	NO.	REVISIONS	DATE
N/A	A. BOUCHARD			
MATERIAL:	DATE:	 SERVICES INDUSTRIELS SAVARIA INC.		
N/A	06/25/03			
DRAWING#	REV#	PAGE:	TITLE:	
-----	2		LIFT FOR HANDICAPPED	

PROVIDE A WALL TO SUPPORT ALL LOADS(BY OTHERS)




RUNWAY PLAN - TOP VIEW

PROJECT:				
MODEL: V1504-P		QTY.: 1		
TOLERANCES IF NOT SPECIFIED		REFERENCE ONLY		
DEC: -----		ANG: -----		
SCALE:	DRAWN BY:	NO.	REVISIONS	DATE
NTS	A. BOUCHARD			
MATERIAL:	DATE:	 SERVICES INDUSTRIELS SAVARIA INC.		
-----	FEB 08 2000			
DRAWING #	REV#	PAGE:	TITLE	
TOGF-2	0	2/2	LIFT FOR HANDICAPPED	



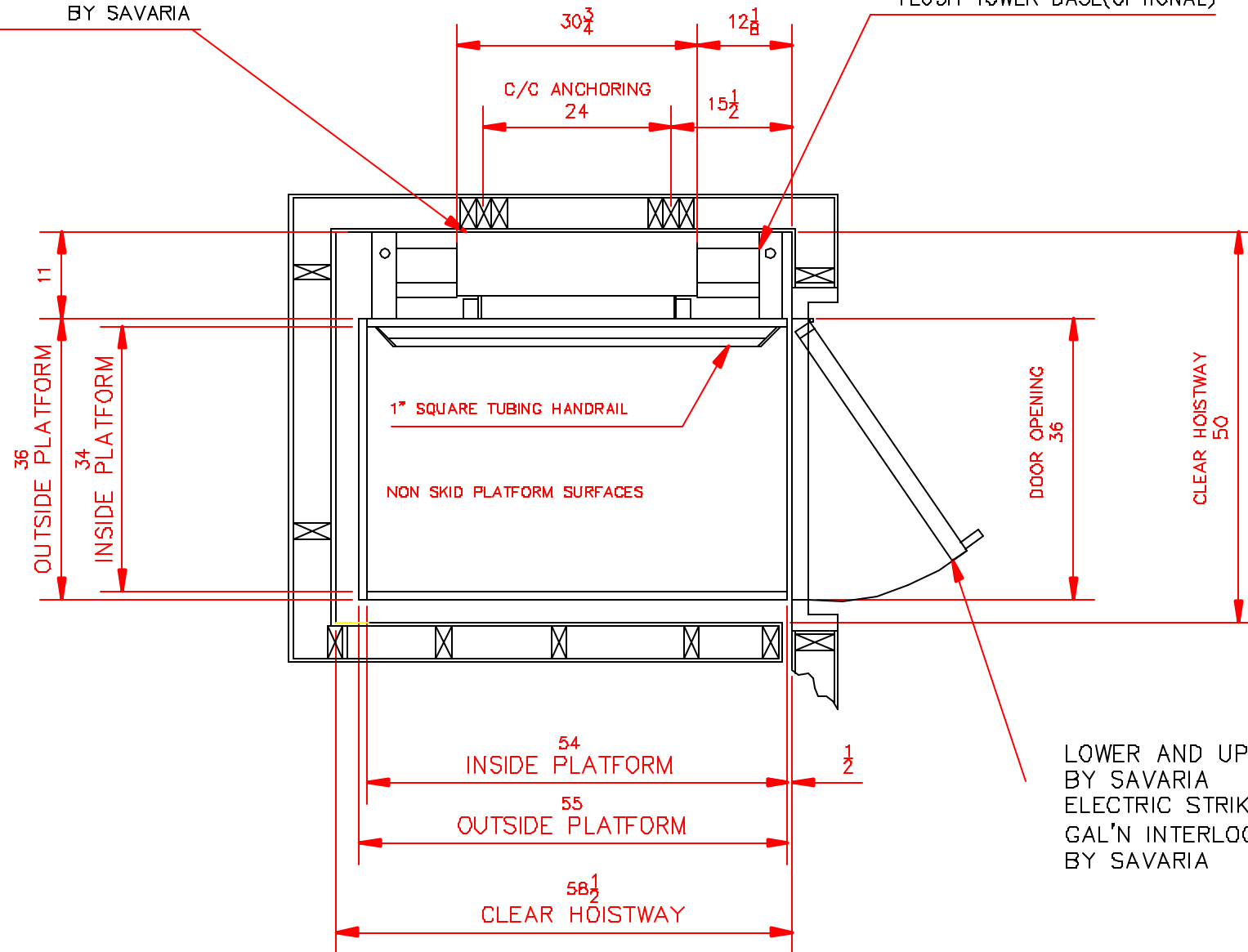
RUNWAY PLAN - TOP VIEW

PROJECT: xxxxxxx		XXXX		
MODEL: V1504-P		QTY.: 1		
TOLERANCES IF NOT SPECIFIED				
DEC: ----		ANG: ----		
SCALE:	DRAWN BY:	NO.	REVISIONS	DATE
NTS	A. BOUCHARD			
MATERIAL:	DATE:	 SERVICES INDUSTRIELS SAVARIA INC.		
----	SEPT 14 2001			
DRAWING #	REV#	PAGE:	TITLE:	
xxx-2	0	2/2	LIFT FOR HANDICAPPED	

PROVIDE A WALL TO SUPPORT ALL LOADS(BY OTHERS)

TOWER REAR PANEL BY SAVARIA

FLUSH TOWER BASE(OPTIONAL)




LOWER AND UPPER DOORS BY SAVARIA
 ELECTRIC STRIKES OR GAL'N INTERLOCK BY SAVARIA

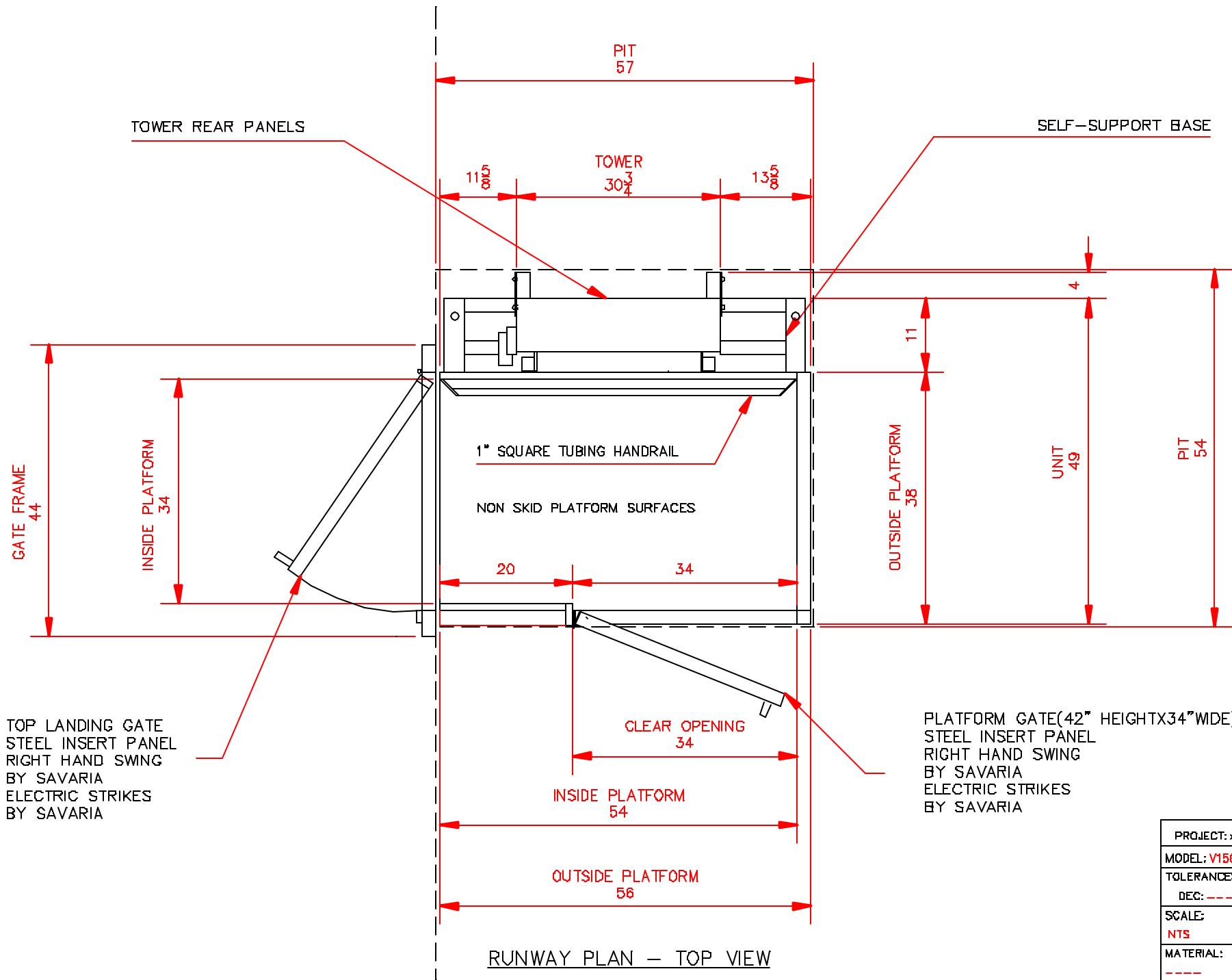
RUNWAY PLAN - TOP VIEW

PROJECT: XXXXXX

MODAL: V1504-STD QTY: 1

TOLERANCES SI NON SPECIFIEES					
DEC: ---- ANG: ----		FOR REFERENCE			
SCALE:	DRAWN BY:	NO.	REVISIONS	DATE	
NTS	A. BOUCHARD				
MATERIAL:	DATE:	 SERVICES INDUSTRIELS SAVARIA INC.			
N/A	06/25/03				
DRAWING #	REV#	PAGE:	TITLE:		
----	2	----	LIFT FOR HANDICAPPED		


V-1504 STD - PLAN VIEW - 90° LOWER ENTRY - LEFT UPPER EXIT - PLATFORM GATE

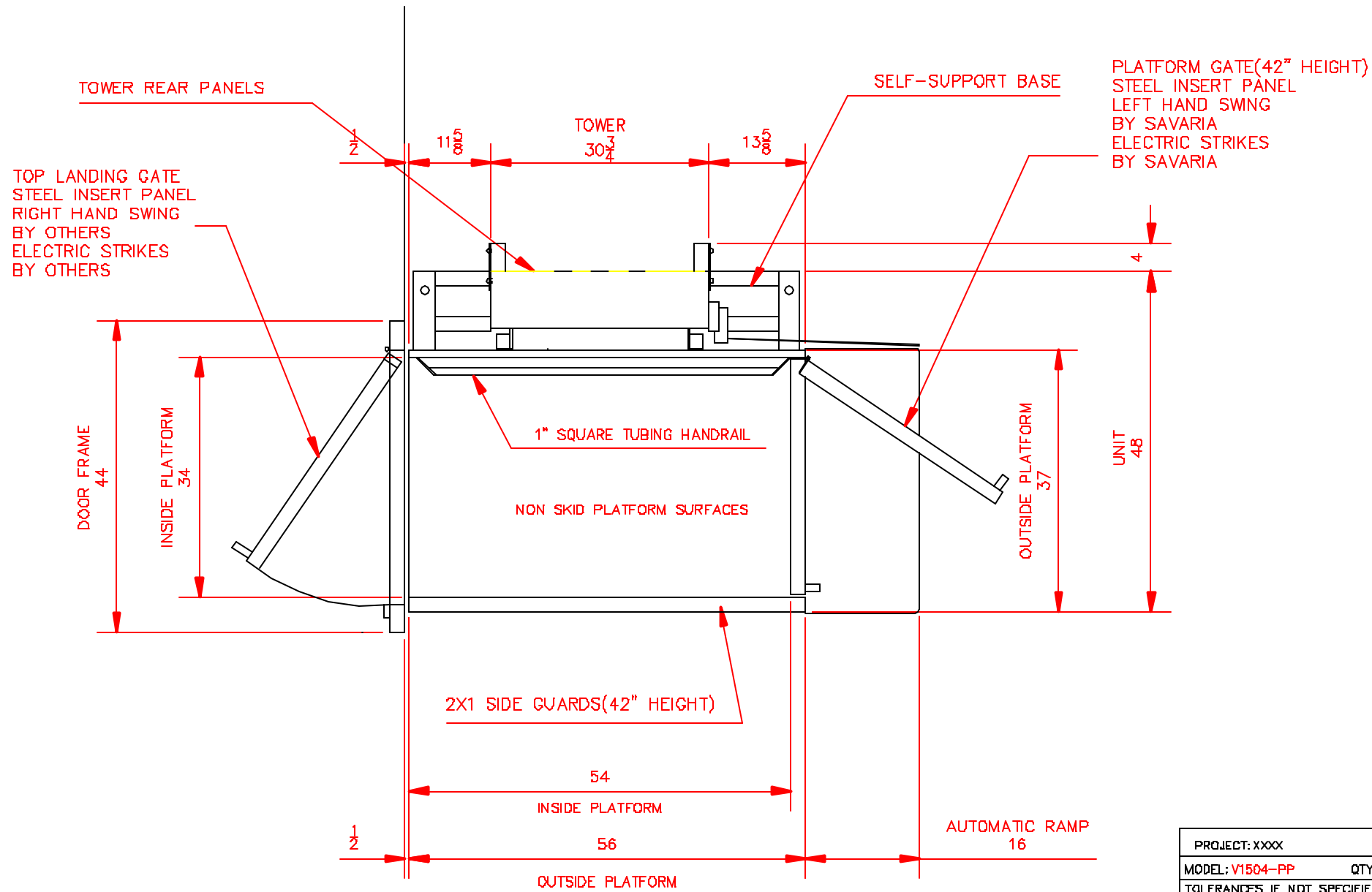


TOP LANDING GATE
STEEL INSERT PANEL
RIGHT HAND SWING
BY SAVARIA
ELECTRIC STRIKES
BY SAVARIA


PLATFORM GATE(42" HEIGHTX34"WDE)
STEEL INSERT PANEL
RIGHT HAND SWING
BY SAVARIA
ELECTRIC STRIKES
BY SAVARIA

RUNWAY PLAN - TOP VIEW

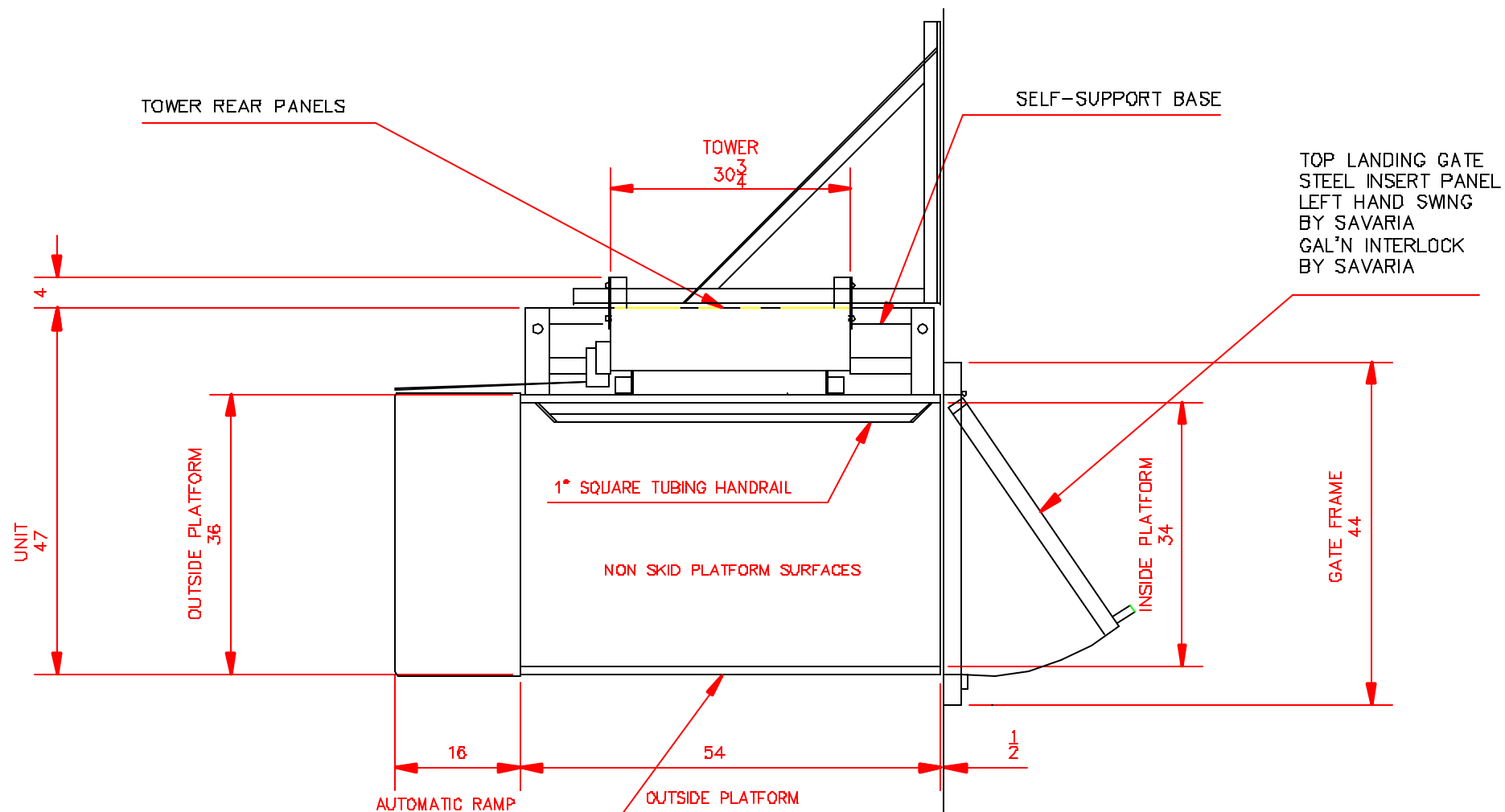
PROJECT: xxxxxxxx				
MODEL: V1504-PP		QTY.: 1		
TOLERANCES IF NOT SPECIFIED				
DEC: ----		ANG: ----		
SCALE:	DRAWN BY:	NO.	REVISIONS	DATE
NTS	A. BOUCHARD			
MATERIAL:	DATE:	 SERVICES INDUSTRIELS SAVARIA INC.		
----	SEPT26 2002			
DRAWING #	REV#	PAGE:	TITLE:	
9352-2	0	2/2	LIFT FOR HANDICAPPED	




RUNWAY PLAN - TOP VIEW

PROJECT: XXXX				
MODEL: V1504-PP		QTY.: 1		
TOLERANCES IF NOT SPECIFIED				
DEC: ----		ANG: ----		
SCALE:	DRAWN BY:	NO.	REVISIONS	DATE
NTS	A. BOUCHARD			
MATERIAL:	DATE:	 SERVICES INDUSTRIELS SAVARIA INC.		
----	MARCH 01 2001			
DRAWING #	REV#	PAGE:	TITLE:	
XXXX-2	0	2/2	LIFT FOR HANDICAPPED	

V-1504 STD - PLAN VIEW - LEFT LOWER ENTRY - RIGHT UPPER EXIT - TRIANGULAR BRACKET (NO HOISTWAY)



RUNWAY PLAN - TOP VIEW

PROJECT: XXXXX				
MODEL: V1504-PP		QTY.: 1		
TOLERANCES IF NOT SPECIFIED				
DEC: ----		ANG: ----		
SCALE:	DRAWN BY:	NO.	REVISIONS	DATE
NTS	A. BOUCHARD			
MATERIAL:	DATE:	 SERVICES INDUSTRIELS SAVARIA INC.		
----	JAN 23 2000			
DRAWING #	REV#	PAGE:	TITLE:	
XXXX-2	0	2/2	LIFT FOR HANDICAPPED	